

DELICATE AND ECONOMICAL

K Series Fiber Laser Cutting Machine for Tube



K Series Fiber Laser Cutting Machine for Tube - K Series

K series models are entry-level tube cutting machines designed for fresh users.

Product parameters

Model	K2	K3
Laser power	3000W/2000W/1500W/1000W	3000W/2000W/1500W/1000W
Effective Round Tube Cutting Diameter	Φ20-Φ230mm	Φ20-Φ360mm
X/Y-axis repositioning accuracy	□20 - □160mm	□20-□254mm
X aRectangular Tube Side Length	20mm-170mm	20mm-300mm
Circumscribed circle diameter	≤230mm	≤360mm
Shortest Remaining Material	190mm	
Max. Length of Machinable Tube	6000mm	
Max. Tube Weight	100Kg	150Kg
Cross-Section	Round tube, square tube, rectangular tube, regular polygon tube, oval tube, long round tube, angle steel, channel steel and other pipes	



Bodor Genius • Auto focus laser head

FREE YOUR HANDS, ENJOY **AUTO** FOCUS

To be the forerunner of the world laser industry, to change human life with laser technology !

AUTO - FOCUS

Applicable to multiple focal lengths, automatically adjusts focal position in cutting process by different sheet thickness.

Free your hands

Focal length is controlled by operating system, which effectively avoids errors or faults caused by manual operation.

Simple and fast

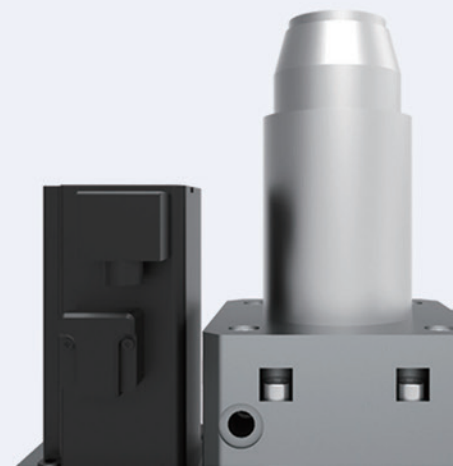
Applying Bodor lightning perforation technology reduce almost 90% work time. When technician changes different metal sheet, Auto focus laser head can automatically read system storage parameters, which make the cutting process less gas, less electricity, lower cost, high efficiency.

Accuracy

By setting perforation focal length and cutting focal length respectively, the cutting is more accurate.

Durable

By increasing collimation & focus protective lens, the key components can be protected. Built-in double water-cooling structure ensures constant temperature of collimating and focusing components, prevents lenses from overheating and prolongs service life of lenses.



Bodor Thinker 3.0



Bodor Thinker 3.0

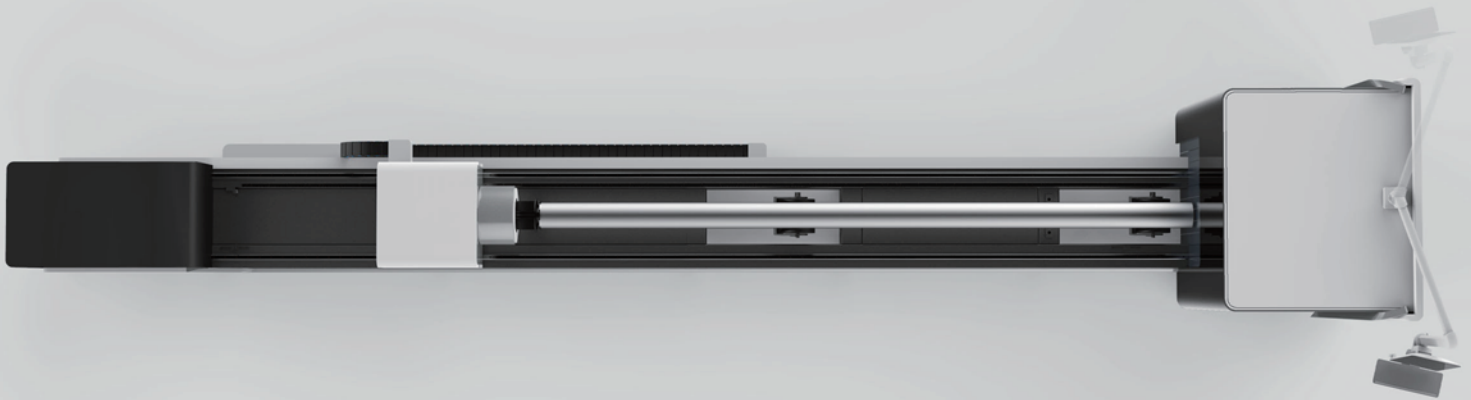
Specialized control system for tube cutting machines. Use advanced technology to spare the need of nesting and resetting for angle steel and channel steel.

RECTANGULAR WELDED BED FORMED WITH SQUARE TUBES



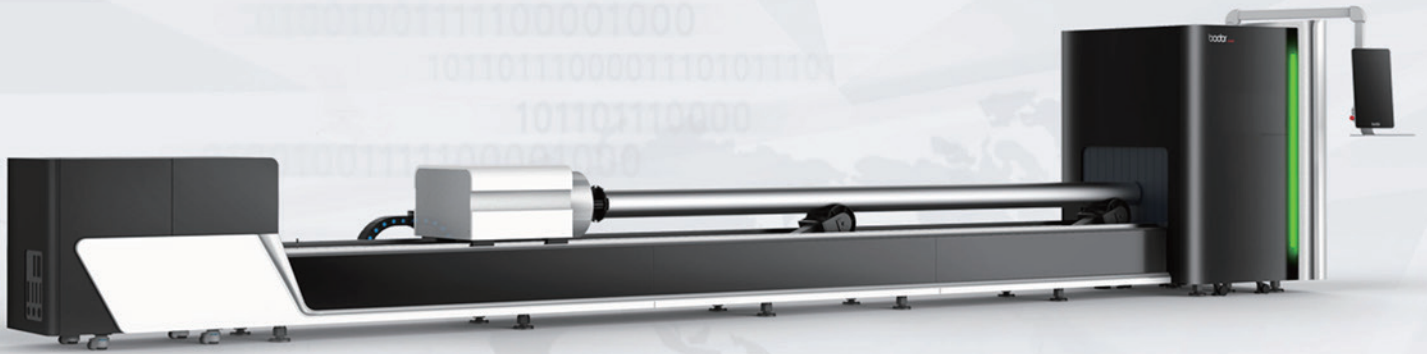
Rectangular Welded Bed Formed with Square Tubes

Clean Structure, Easy to Place



Bodor Signature Designing Style

Use customized sheet metal to make our machine durable and optimize space utilization.



abundant safety sensor modules



comprehensively protective cutting



well-developed air extraction and dust

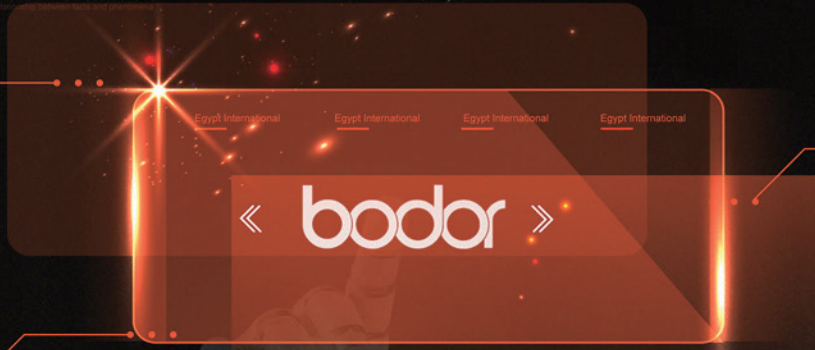
Multiple Safety Measures

Safety sensor modules, completely isolated cutting area along with well-developed smoke and dust removal system, reduce hazard level to the lowest.

01

Egypt International

The society is used to connect science and technology, which is called science and technology for short. In fact, they are closely related and often inter-convertible. Scientific research is theoretical problems and technical solution to practical problems. The purpose is to solve by science is to find out the relationship between facts and phenomena.



Egypt International

The society is used to connect science and technology, which is called science and technology for short. In fact, they are closely related and often inter-convertible. Scientific research is theoretical problems and technical solution to practical problems. The purpose is to solve by science is to find out the relationship between facts and phenomena.

02

Egypt International

The society is used to connect science and technology, which is called science and technology for short. In fact, they are closely related and often inter-convertible. Scientific research is theoretical problems and technical solution to practical problems. The purpose is to solve by science is to find out the relationship between facts and phenomena.



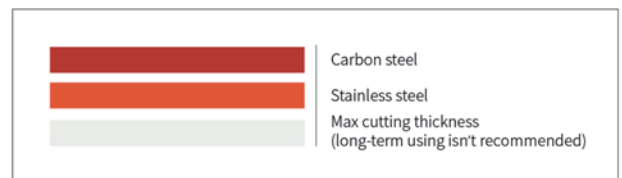
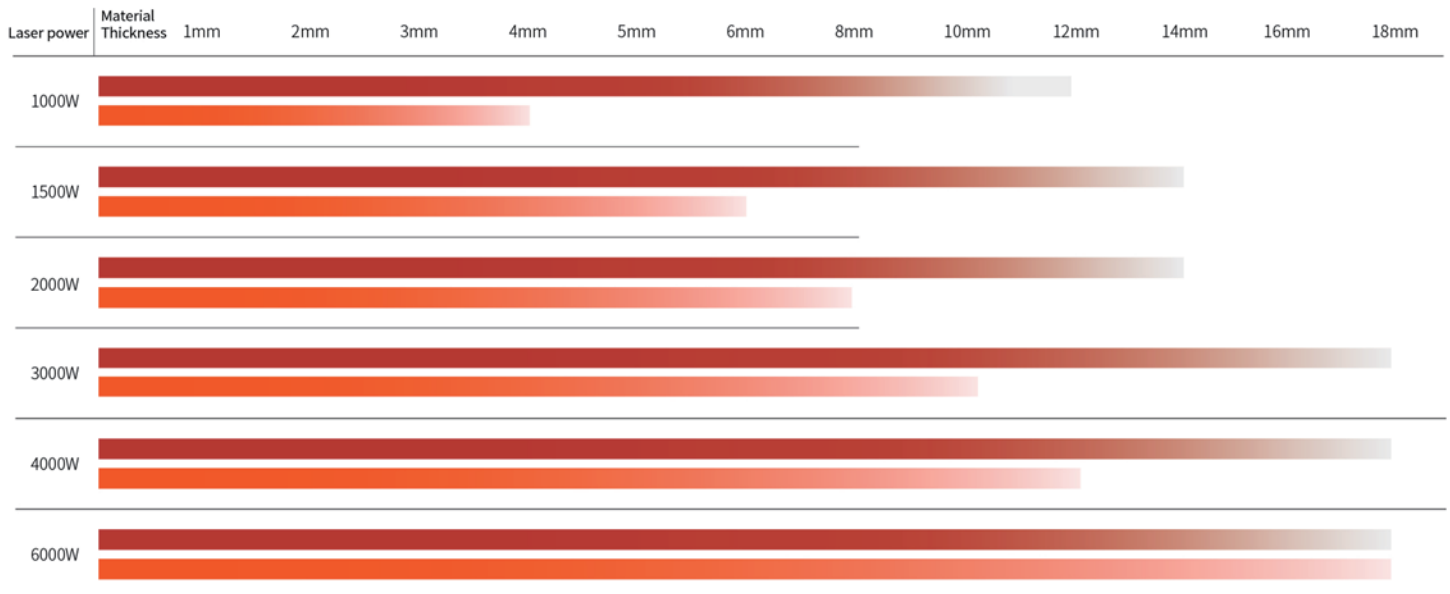
The society is used to connect science and technology, which is called science and technology for short. In fact, they are closely related and often inter-convertible. Scientific research is theoretical problems and technical solution to practical problems.

The society is used to connect science and technology, which is called science and technology for short. In fact, they are closely related and often inter-convertible. Scientific research is theoretical problems and technical solution to practical problems.

Ergonomics

Load and operate from both sides, convenient and easy to use, offering favorable user experience.

Cutting Capacity



Above data is only for reference

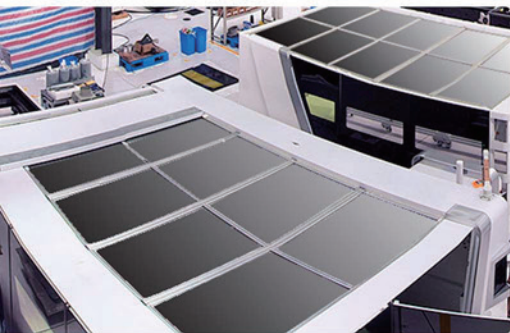
Fiber Laser Cutting Process Parameters

		1000W	MAX-1000W(25um)	1500W	2000W	MAX-2000W(50)	YLR-2000W	3000W	MAX-3000W(50)	4000W	MAX-4000W(50)
Material	Thickness	speed m/min	speed m/min	speed m/min	speed m/min	speed m/min	speed m/min	speed m/min	speed m/min	speed m/min	speed m/min
Carbon steel (Q235A) O2	1	8.0-10	8.0-10	8.0-10	8.0-10	8.0-10	8.0-10	8.0-10	8.0-10		
	2	4.0-6.5	4.5-7.0	4.5-6.5	4.7-6.5	4.7-6.5	4.7-6.5	4.8-7.5	4.8-7.5		
	3	2.4-3.0	2.4-3.0	2.6-4.0	3.0-4.8	3.0-4.8	3.0-4.8	3.3-5.0	3.3-5.0		
	4	2.0-2.4	2.0-2.4	2.5-3.0	2.8-3.5	2.8-3.5	2.8-3.5	3.0-4.2	3.0-4.2		
	5	1.5-2.0	1.5-2.0	2.0-2.5	2.2-3.0	2.2-3.0	2.2-3.0	2.6-3.5	2.6-3.5		
	6	1.4-1.6	1.4-1.6	1.6-2.2	1.8-2.6	1.8-2.6	1.8-2.6	2.3-3.2	2.3-3.2		
	8	0.8-1.2	0.8-1.2	1.0-1.4	1.2-1.8	1.2-1.8	1.2-1.8	1.8-2.6	1.8-2.6		
	10	0.6-1.0	0.6-1.0	0.8-1.1	1.1-1.3	1.1-1.3	1.1-1.3	1.2-2.0	1.2-2.0		
	12	0.5-0.8	0.5-0.8	0.7-1.0	0.9-1.2	0.9-1.2	0.9-1.2	1.0-1.6	1.0-1.6		
	14			0.5-0.7	0.7-0.8	0.7-0.9	0.8-1.0	0.9-1.2	0.9-1.2		
	16				0.6-0.7	0.6-0.8	0.6-0.8	0.7-1.0	0.7-1.0		
	18				0.4-0.6	0.5-0.7	0.5-0.7	0.6-0.8	0.6-0.8		
	20							0.5-0.8	0.5-0.7		
	22							0.3-0.7	0.3-0.7		
25											
Stainless steel (201) N2	1	18-25	24-36	20-27	24-30	24-50	24-50	30-35	30-58	No support	
	2	5-7.5	6-10	8.0-12	9.0-12	9.0-14	9.0-15	13-21	13-39		
	3	1.8-2.5	2.2-3.5	3.0-5.0	4.0-6.5	4.0-7.0	4.8-7.5	6.0-10	6-14		
	4	1.2-1.3	1.2-1.6	1.5-2.4	3.0-4.2	3.2-4.5	3.2-4.5	4.0-6.0	4.0-7.0		
	5	0.6-0.7	0.6-0.75	0.7-1.3	1.8-2.5	2.0-2.8	2.0-2.8	3.0-5.0	3.0-5.0		
	6			0.7-1.0	1.2-1.8	1.2-2.0	1.2-2.0	2.0-4.0	2.0-4.0		
	8				0.7-1.0	0.7-1.0	0.7-1.0	1.5-2.0	1.5-2.0		
Aluminum N2	1	6.0-10	6.0-10	10-20	15-25	15-25	20-30	25-38	25-40		
	2	2.8-3.6	2.8-3.6	5.0-7.0	7-10	7-10	10-15	10-18	13-20		
	3	0.7-1.5	0.7-1.5	2.0-4.0	4.0-6.0	4.0-6.0	5.0-7.0	6.5-8.0	6.5-8.0		
	4			1.0-1.5	2.0-3.0	3.5-4.0	3.5-5.0	3.5-5.0	3.5-5.0		
	5			0.7-1.0	1.2-1.8	1.2-1.8	1.8-2.5	2.5-3.5	2.5-3.5		
	6				0.7-1.0	1.0-1.5	1.0-1.5	1.5-2.5	1.5-2.5		
	8				0.6-0.8		0.6-0.8	0.7-1.0	0.7-1.0		
	10							0.4-0.7			
	12							0.3-0.45			
	16										
Brass N2	1	6.0-10	6.0-10	8.0-13	10-16	10-16	12-18	20-35	20-35		
	2	2.8-3.6	2.8-3.6	3.0-4.5	4.5-7.5	5.0-6.0	6.0-8.5	6.0-10	6.0-10		
	3	0.5-1.0	0.5-1.0	1.5-2.5	2.5-4.0	2.5-4.0	2.5-4.0	4.0-6.0	4.0-6.0		
	4			1.0-1.6	1.5-2.0	2.0-3.0	2.0-3.0	3.0-5.0	3.0-5.0		
	5			0.5-0.7	0.9-1.2		0.9-1.2	1.5-2.0	1.5-2.0		
	6				0.4-0.7		0.4-0.9	1.0-1.8	1.0-1.8		
	8							0.5-0.7			
	10										
12											



OFFICE

For more information, please go to the website : www.bodor.com



WORKSHOP

For more information, please go to the website : www.bodor.com